



# VERIDIAN

RESIDENCE

@ V TOWN, PJ

VIBRANT · VERSATILE



# VERIDIAN

RESIDENCE

@VTOWN (The Newest Town In PJ)

3km To Pyramid



- SEGI College
- Taylor's University
- Sunway University
- Sri Kuala Lumpur International School
- Monash University
- INTI International College
- The One Academy
- Sunway Medical Centre
- Sunway Pyramid
- Subang Jaya Medical Centre

- 3.0 km to Sunway Pyramid Shopping Mall
- 3.2 km to Sunway Medical Centre
- 4.0 km to Sunway University
- 5.2 km to Assunta Hospital
- 6.0 km to PJ New Town
- 6.1 km to Megah Rise Mall

## VTOWN

VTOWN is the newest lifestyle hub in Petaling Jaya. It is surrounded by renowned universities, esteemed colleges, and established medical centres. VTOWN consists of two residential developments, namely Veridian and Verando, and a vibrant commercial precinct known as The Village. The Village is the latest commercial hotspot featuring retail outlets, F&B establishments, a sporting arena, and more.



Lifestyle F&B Hub



Pickleball Courts



# MASTERING NEW LIFESTYLE

## A JAPANDI MASTERPIECE

Inspired by Japanese and Scandinavian concept, Veridian embodies a progressive urban living approach. Certified with eco-friendly initiative GreenRE Silver which reflects our commitment to a greener future thus cultivating sustainable, harmonious and enriching living experience.



**TOWER A**  
(Launching Now)

**TOWER B**  
(Coming soon)

**TOWER C**  
(Coming soon)



Design With  
Lifestyle  
In Mind



Japandi Living  
Concept



Smart Living With  
Versatile Space From  
947 sq.ft. - 1,302 sq.ft.



Eco-conscious  
Residential  
Development



Main Entrance  
(Will be ready upon completion Tower C)

## VIBRANT LIFESTYLE SPACES

### AN EXTENSION OF HOME

The dedicated community space includes urban amenities and co-working areas, offering a revitalizing sense of life.

- Amphitheatre
- Private function room with show kitchen
- Indoor & outdoor co-working space



Amphitheatre



Co-working Space



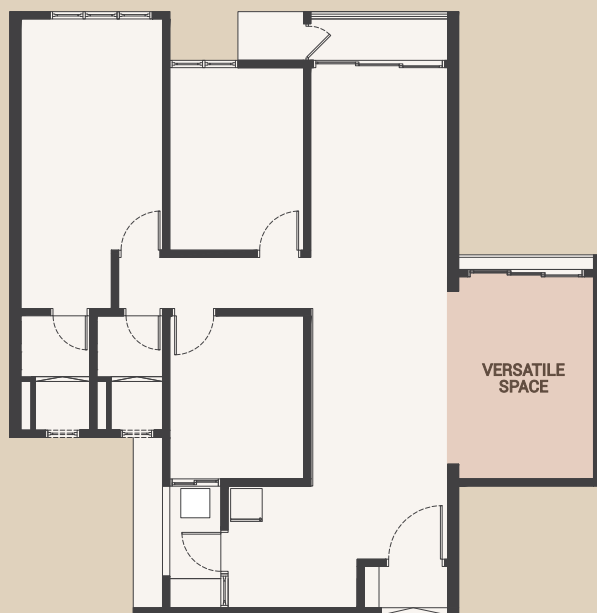
Private Function Room With Show Kitchen  
(Will be ready upon completion Tower B)

# MASTERING NEW CONCEPT

## VERSATILE SPACES FOR ANY LIFESTYLE

A flexible area to transform into your ideal space,  
suitable for all age and stage of life.

- ▼ Flexible layout
- ▼ Multi-generational living



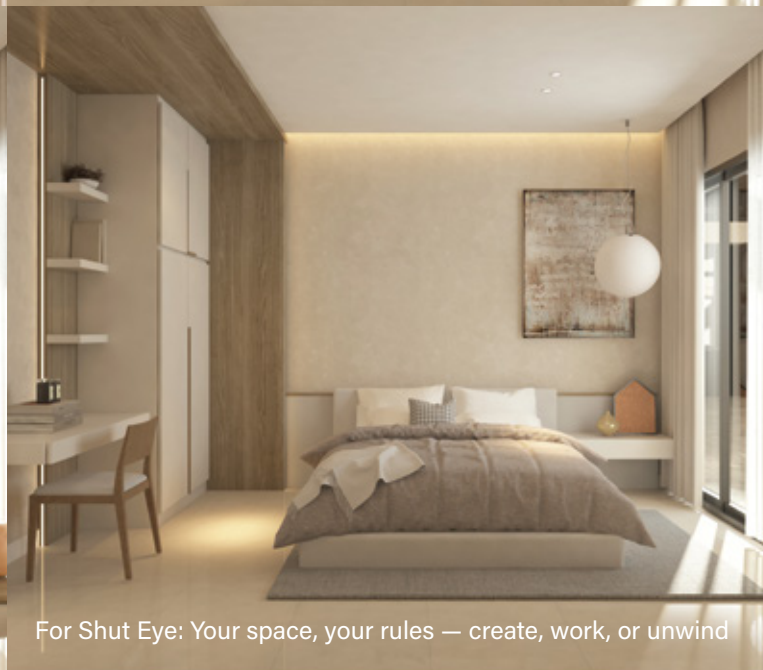
For Makan: Where every meal becomes a memory



For Work: Uninterrupted focus and space to thrive



For Play: Wonderland for little explorers



For Shut Eye: Your space, your rules — create, work, or unwind

## 3.2 ACRES OF LIFESTYLE FACILITIES FOR MODERN LIVING



### TOWER A

- |                      |                   |                       |                                  |                                      |
|----------------------|-------------------|-----------------------|----------------------------------|--------------------------------------|
| 1 50m Lap Pool       | 7 Sun Lounge      | 13 Water Fountain     | 19 Gathering Area                | 25 Private-owned Laundry             |
| 2 Wading Pool        | 8 Cabana (Gazebo) | 14 Amphitheatre Stage | 20 Jogging Track                 | 26 Management Office                 |
| 3 Leisure Pool       | 9 Water Curtain   | 15 Reflexology Path   | 21 Multipurpose Hall             | 27 Indoor & Outdoor Co-Working Space |
| 4 Jacuzzi            | 10 Shower Area    | 16 BBQ Area           | 22 Public Toilet & Changing Room | 28 Seating Area                      |
| 5 Kids Pool Fountain | 11 Reading Area   | 17 BBQ Pit            | 23 Surau                         | 29 Swing Shelter                     |
| 6 Shallow Path       | 12 Chess Corner   | 18 Hammock Garden     | 24 Private-owned Kiosk           | 30 Gymnasium                         |

## MASTERING NEW MOMENTS

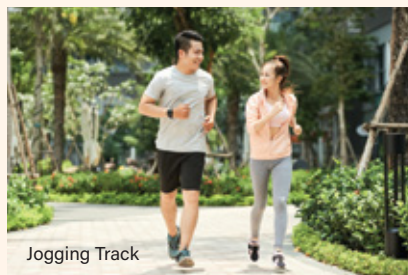
More than just a home, Veridian is a place where life happens. Our facilities are thoughtfully designed for you to relax and enjoy — whether you're spending time in the entertainment areas, staying active in the sports zones, or connecting with neighbours in the shared community spaces.



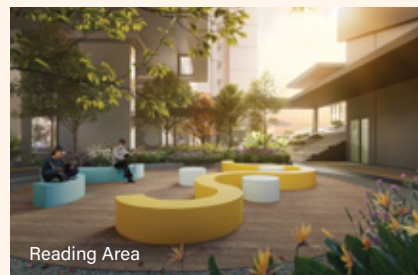
50m Lap Pool



Swing Shelter



Jogging Track



Reading Area

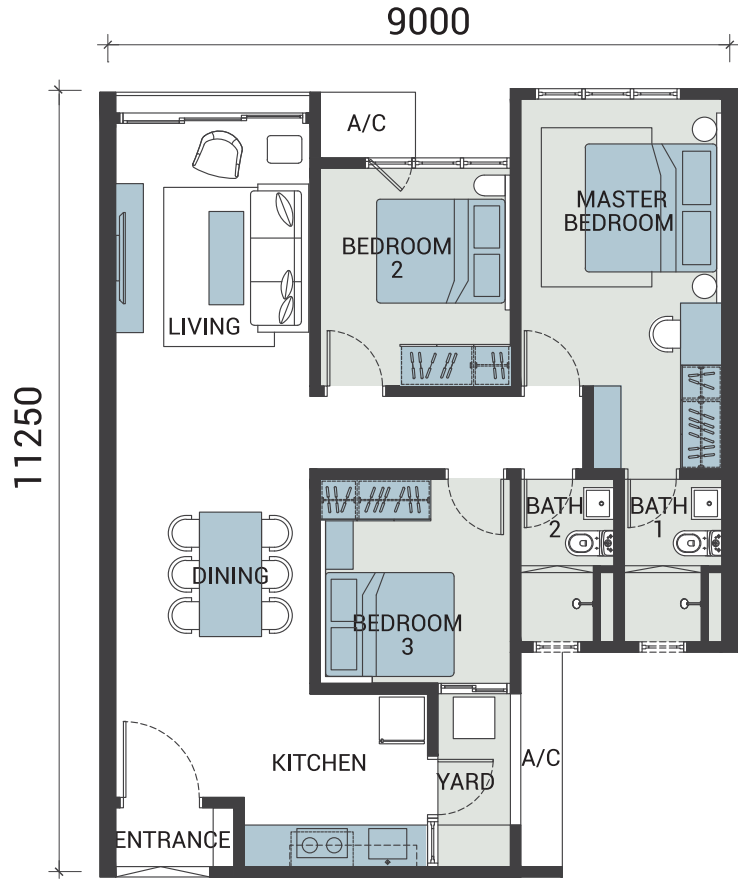
TYPE

A

947 sq.ft.

3  Bedrooms

2  Baths



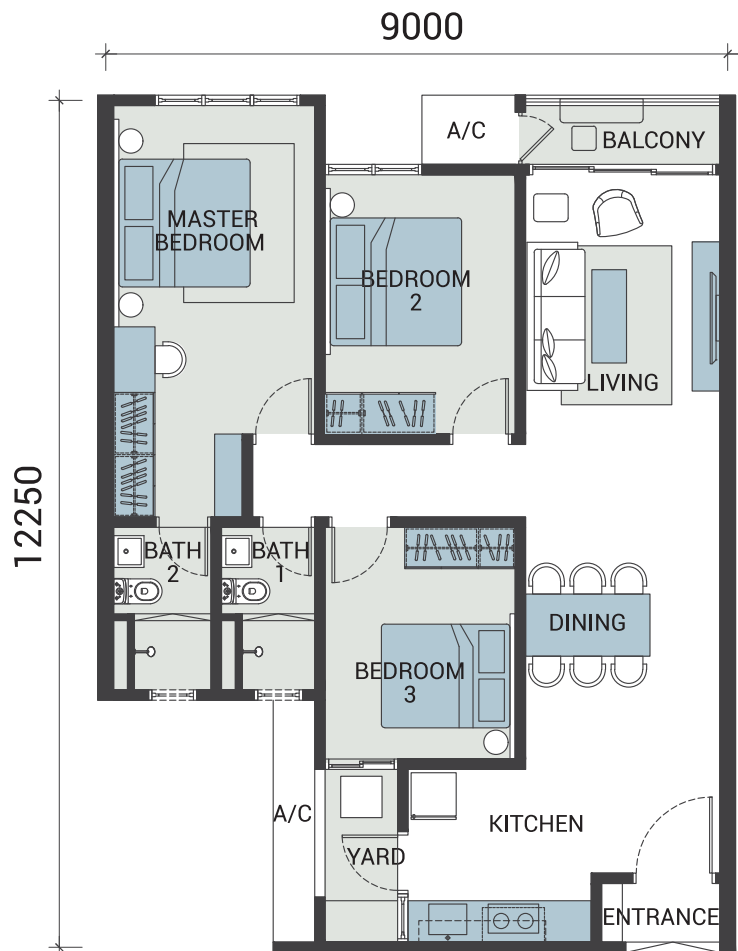
TYPE

B

1,055 sq.ft.

3  Bedrooms

2  Baths



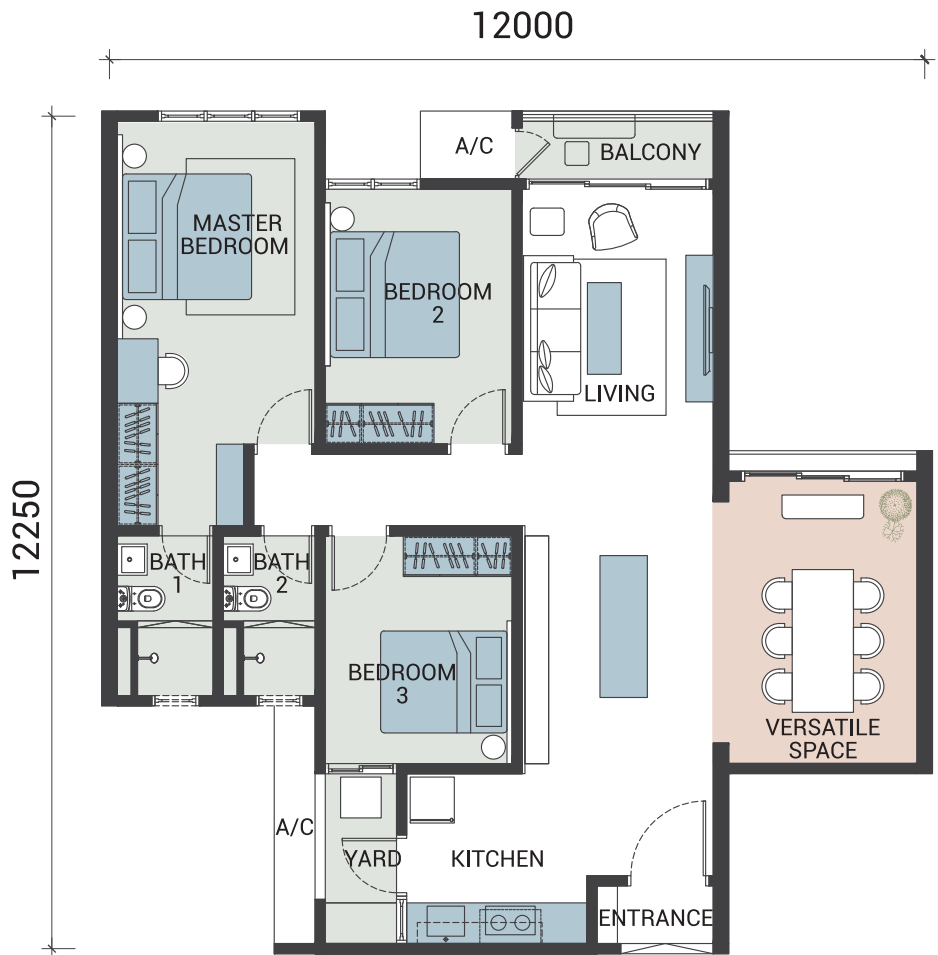
TYPE  
**A1**  
1,098 sq.ft.

- 3  Bedrooms
- 1  Versatile Space
- 2  Baths






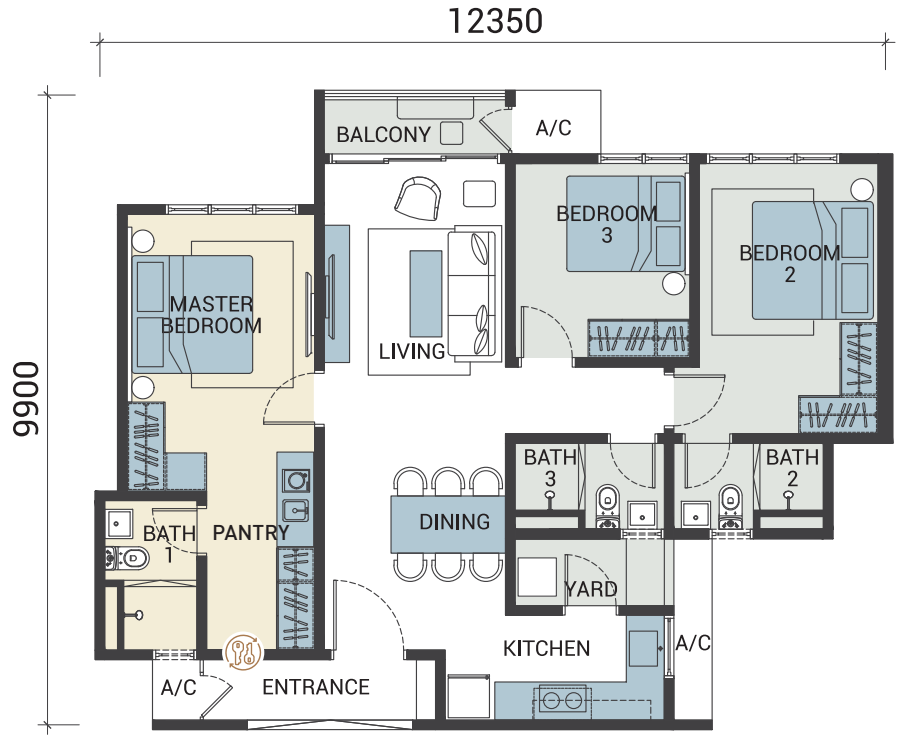
TYPE  
**B1**  
1,206 sq.ft.

- 3  Bedrooms
- 1  Versatile Space
- 2  Baths






TYPE  
**B2**  
1,055 sq.ft.

- 2  Bedrooms
- 1  Dual Key Ready
- 3  Baths







TYPE  
**C**  
1,195 sq.ft.

- 3  Bedrooms
- 1  Dual Key Ready
- 3  Baths



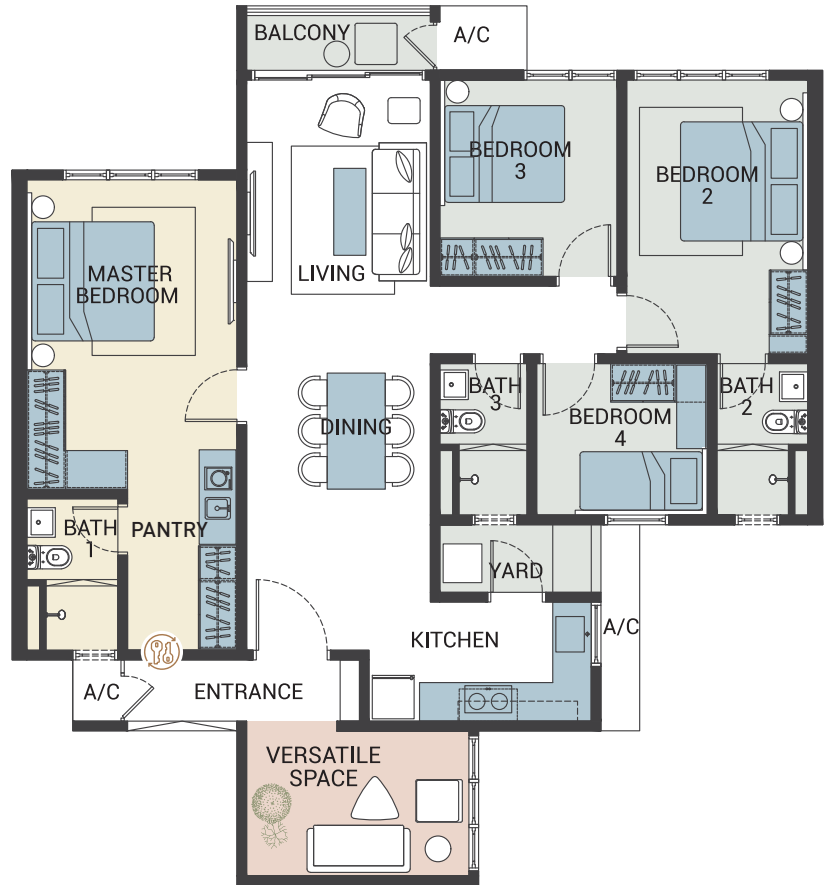
TYPE  
**C1**  
1,302 sq.ft.

- 3  Bedrooms
- 1  Dual Key Ready
- 1  Versatile Space
- 3  Baths



13500

12350

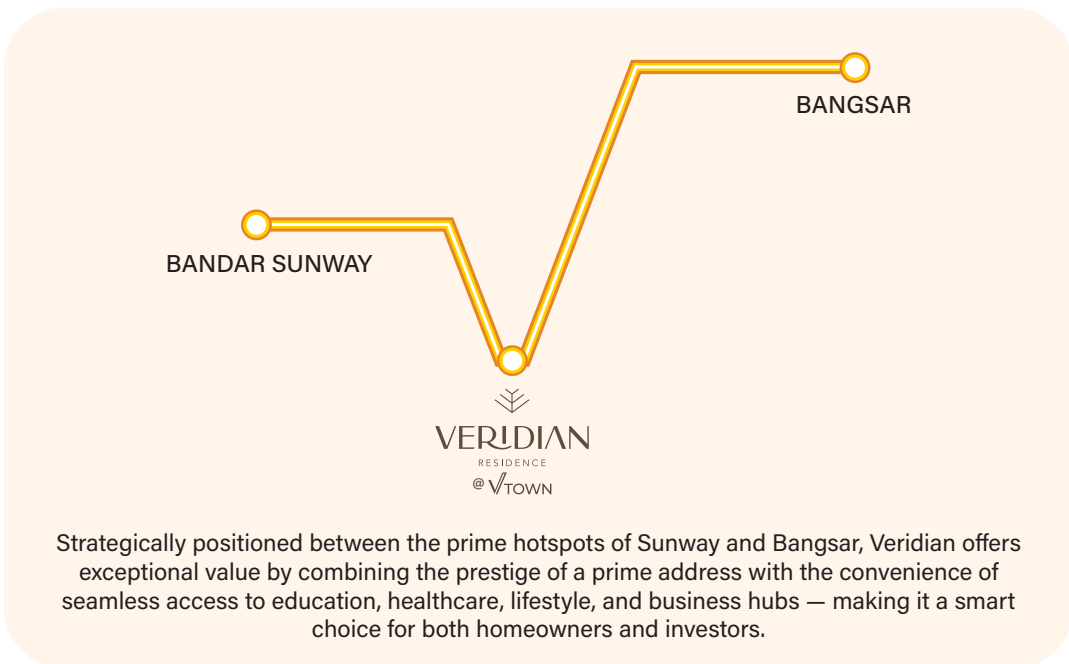
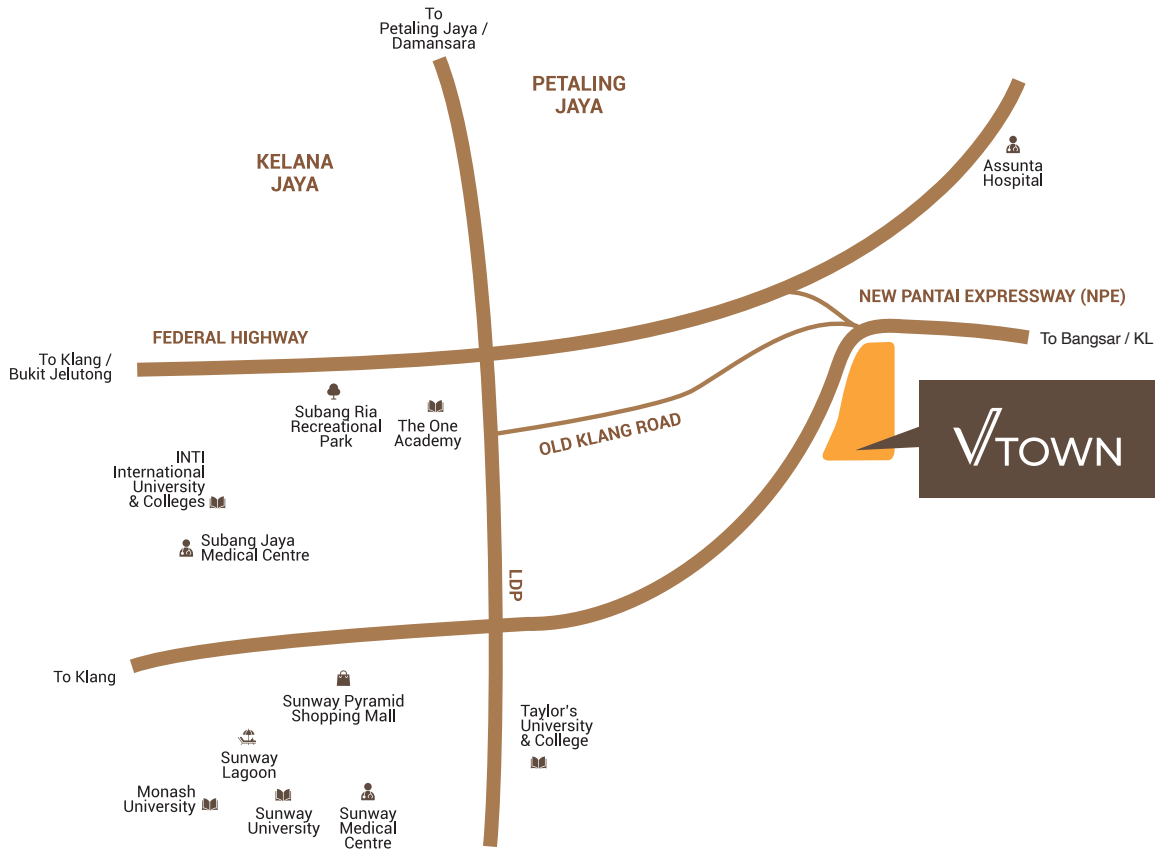


## SPECIFICATIONS

STRUCTURE	Reinforced Concrete						
WALL	Brickwall / Reinforced Concrete Wall /Blockwall						
ROOFING	Reinforced Concrete Slab						
CEILING	All Bedrooms	Skim Coat					
	Living/ Dining/ Lounge/ Kitchen	Skim Coat					
	All Bathrooms	Plaster Ceiling					
WINDOWS	Aluminium Frame Glass Window						
DOORS	Entrance	Timber Door					
	Other Areas	Flush Door					
	Yard	Flush Door					
	Balcony	Sliding Door					
IRONMONGERY	Selected Lockset						
WALL FINISHES	Kitchen	Tiles @Full Height					
	All Bathrooms	Tiles @Full Height					
	Other Areas	Paint					
PAINTING	Internal Wall	Paint					
	External Wall	Paint					
FLOOR FINISHES	Living/ Dining/ Lounge	Tiles					
	Kitchen	Tiles					
	All Bedrooms	Tiles					
	Balcony/ Yard	Tiles					
	All Bathrooms	Tiles					
SANITARY FITTINGS	<b>TYPE A/ A1/ B/ B1</b>	<b>TYPE B2/ C/ C1</b>					
Wash Hand Basin	2	3					
WC	2	3					
Shower	2	3					
Toilet Roll Holder	2	3					
Hand Bidet	2	3					
Kitchen Sink	1	1					
ELECTRICAL	<b>TYPE A</b>	<b>TYPE A1</b>	<b>TYPE B</b>	<b>TYPE B1</b>	<b>TYPE B2</b>	<b>TYPE C</b>	<b>TYPE C1</b>
Lighting Point	14	16	15	17	16	18	19
Fan Point	4	5	4	5	4	4	5
13A Power Point	18	19	18	20	20	23	23
Air Cond Point	4	5	4	5	4	5	5
Water Heater Point	2	2	2	2	3	3	3
Fiber Wall Socket	1	1	1	1	1	1	1
TV Point	1	1	1	1	2	2	2
Bell Point	1	1	1	1	1	1	1

# WELL-CONNECTED TO VARIOUS CONVENIENCES

Getting to and heading out from Veridian is easy as it's connected to major highways. It's also complemented by a wide variety of educational, health and lifestyle centres that adds to every family's convenience.



Another Prestigious Project By:  
**PERUMAHAN MASTERON SDN. BHD.**  
(199301019716)

**MASTERON GALLERY @ PJ**  
Ground Floor, Menara Choy Fook On,  
No. 1B, Jalan Yong Shook Lin, 46050 Petaling Jaya,  
Selangor Darul Ehsan.

Certified By:



**03-9212 7886**  
[www.veridian.my](http://www.veridian.my)

Developer: Perumahan Masteron Sdn Bhd • Developer's License No.: 30876/09-2029/0219(N) • Validity Period: 27/09/2024 – 26/09/2029 • Advertising and Sales Permit No.: 30876-1/03-2028/0262(A)-(S) • Validity Period: 27/03/2025 – 26/03/2028 • Land Tenure: Leasehold 99 Years (Expiring On 06/08/2118) • Land Encumbrances: Nil • Approving Authority: Majlis Bandaraya Petaling Jaya • Approved Building Plan No.: MBPJ/120100/TP10/98/2024(B) • Type Of Development: Condominium • Total Unit: 316 • Selling Price: RM669,300 (min) – RM950,900 (max) • 7% Discount For Bumiputera • Expected Completion Date: October 2029 • Restriction Of Interest: The Land is not transferable, lease or charged without prior consent from the State Authority. • The information contained herein is subject to change without notification as may be required by the relevant authorities or the developer's architect and cannot form part of an offer or contract. Whilst every care is taken in providing this information, the owner, developer and managers cannot be held liable for variations. All illustrations and pictures are artist impressions only. The items are subject to variations, modifications and substitutions as may be recommended by the Company's Architect and / or relevant Approving Authorities. IKLAN INI TELAH DILULUSKAN OLEH JABATAN PERUMAHAN NEGARA